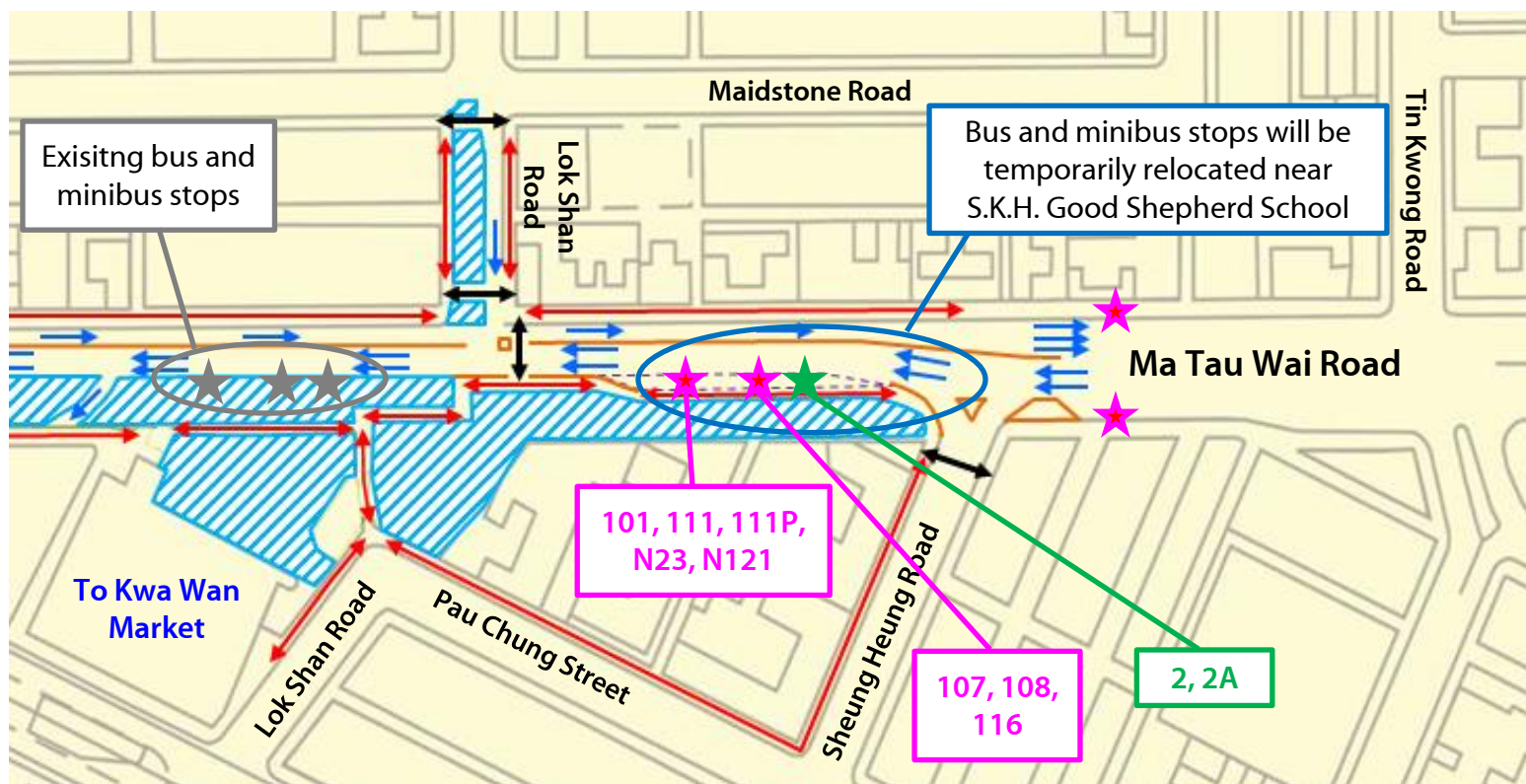








Shatin to Central Link

Ma Tau Wai Road Temporary Traffic Management Scheme

Relocation of Bus and Minibus Stops (Effective from 16 Aug 2015)

To facilitate the construction of Ma Tau Wai Station, with effect **from early morning (around 6am)** on 16 Aug 2015, the bus and minibus stops outside To Kwa Wan Market will be relocated towards the schools near the junction of Ma Tau Wai Road and Sheung Heung Road. Please refer to the enclosed map for details.



-  Water-filled Barriers
-  Traffic Lane
-  Pedestrian Crossing
-  Footpath
-  Bus Stops
-  Minibus Stops
-  Works Area

 **Enquiry**

Shatin to Central Link Information Centre : **2334 2201**
Address : Shop No. 30A, Chi Kiang Street, To Kwa Wan, Kowloon (I-Feng Mansion)
Officer Hours : Mondays to Fridays, 2:00pm – 6:00pm | Saturdays, 10:00am – 1:00pm | Closed on Sundays and public holidays

MTR Projects Hotline : **2993 3333**
Officer Hours: Mondays to Fridays, 8:30am to 6:00pm | Saturdays, 8:30am to 1:00pm
Calls will be connected to a voice mailbox when the lines are busy or after office hours. Please leave your message and we will contact you as soon as possible.

24-hour Hotline : **5948 6330** www.mtr-shatincentrallink.hk

