



# Briefing on the Development of Shatin to Central Link (SCL)

25 October 2010

# SCL Alignment





### North South Corridor

- Extension of East Rail Line across the harbour to Admiralty
- Provide direct cross-boundary train service to Hong Kong Island



### East West Corridor

- Extension of Ma On Shan Line
- Through running to Wu Kai Sha by connecting to West Rail Line
- Serve Hin Keng, Kai Tak, Kowloon City, Ma Tau Wai, To Kwa Wan & Ho Man Tin areas

# SCL Temporary Reclamation



 Temporary reclamation

# SCL Permanent Facilities – Kai Tak



# SCL

## Permanent Facilities – Hung Hom



Hung Hom Station ventilation shafts



North Ventilation Building

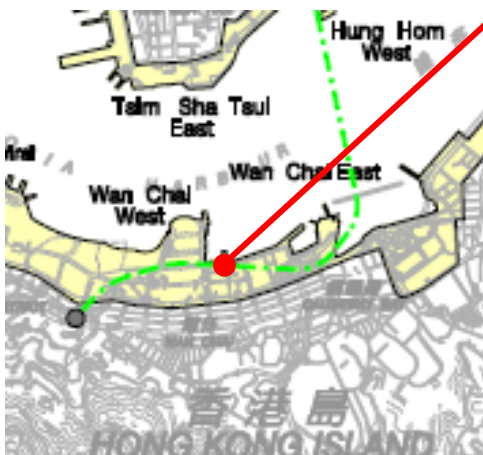
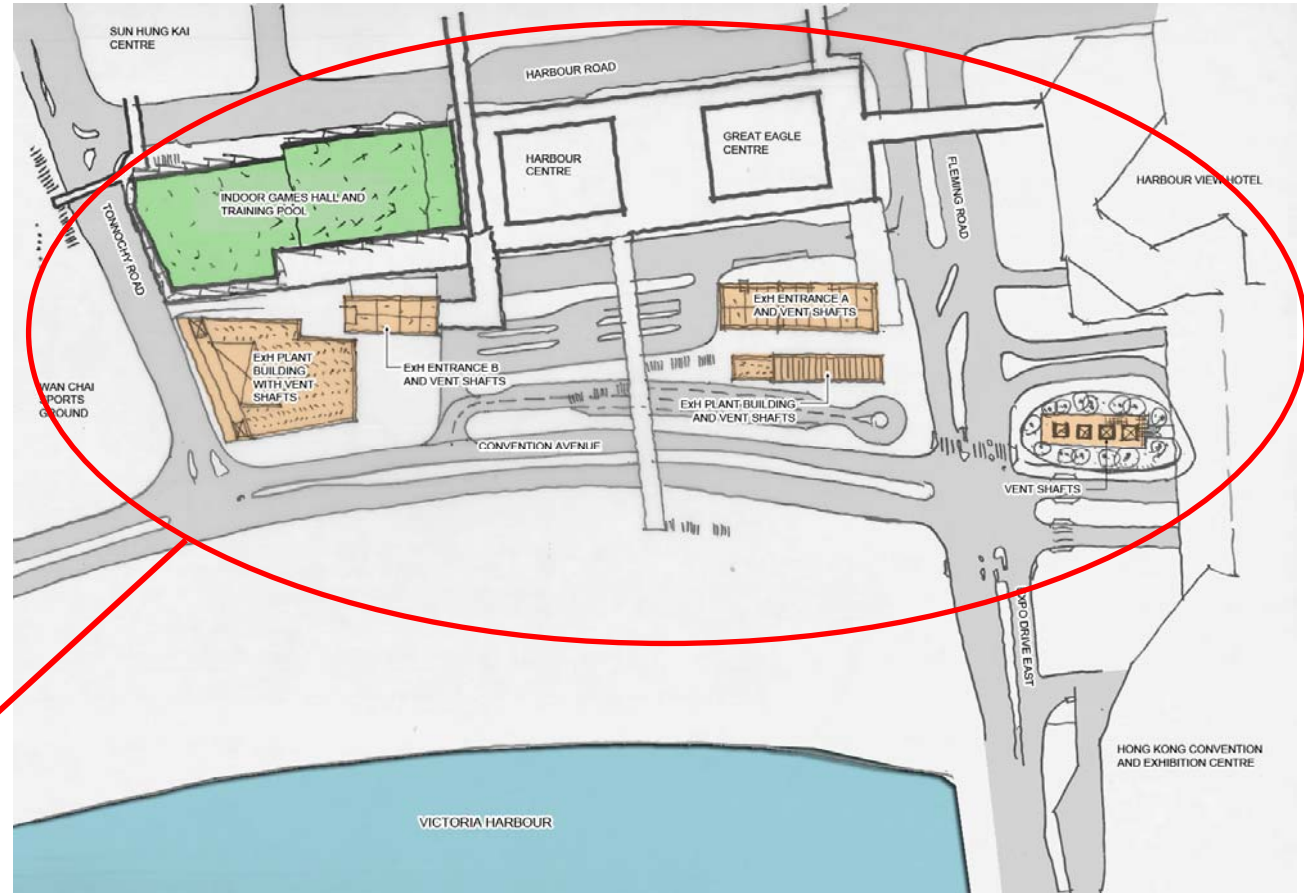
# SCL

## Permanent Facilities – Wan Chai North

Police Officers' Club cum South Ventilation Building

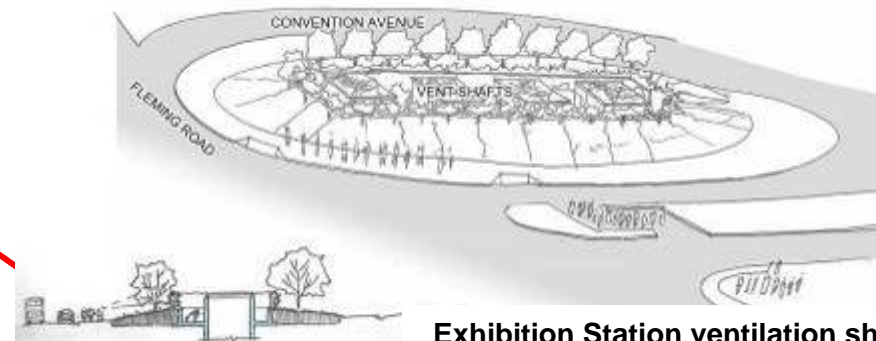
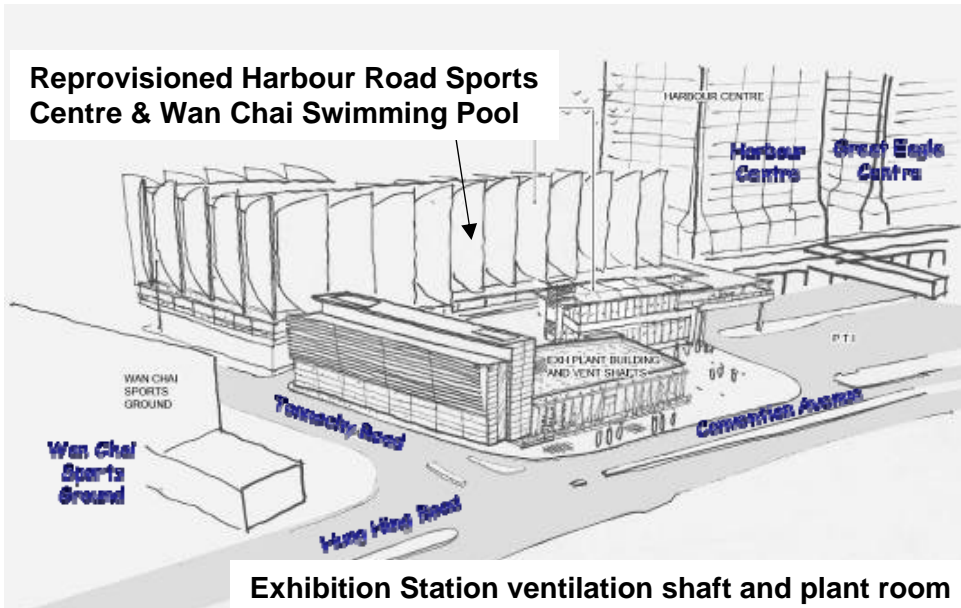


# SCL Permanent Facilities – Wan Chai North

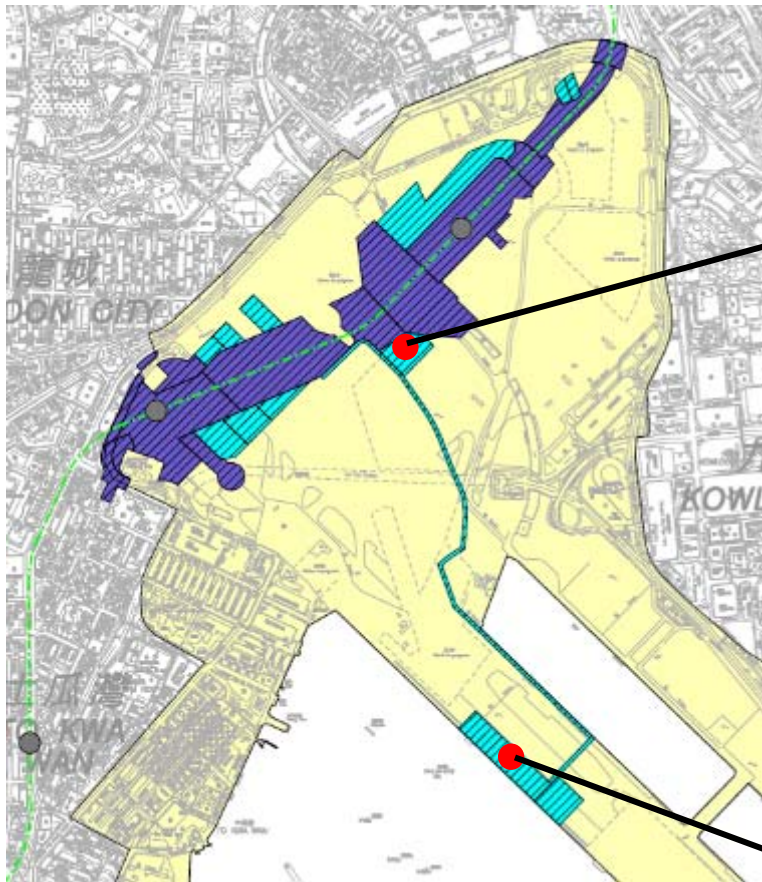


# SCL

## Permanent Facilities – Wan Chai North



# SCL Temporary Facilities – Kai Tak



**Works Area**



**Works Site**

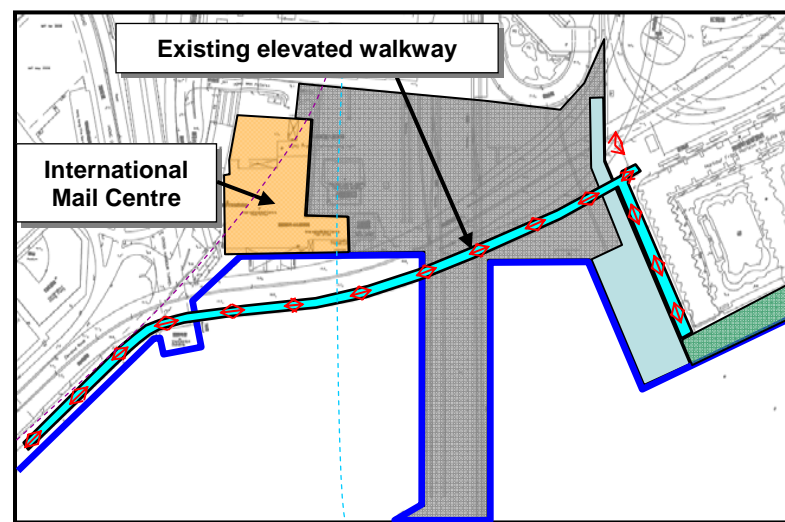
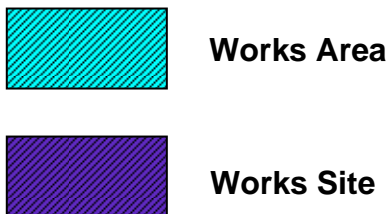


**Concrete Batching Plant**



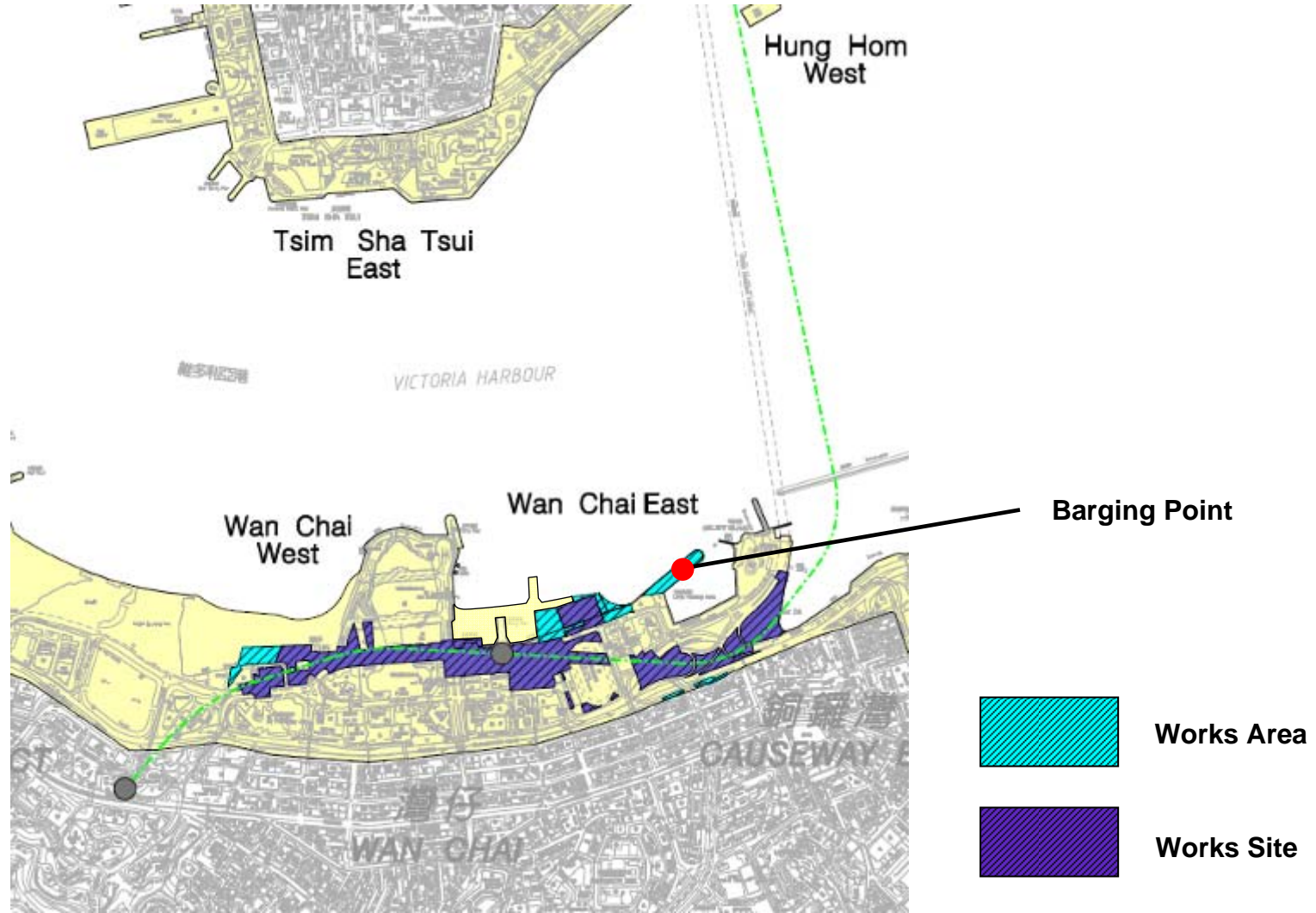
**Barging Point**

# SCL and KTE Temporary Facilities – Hung Hom



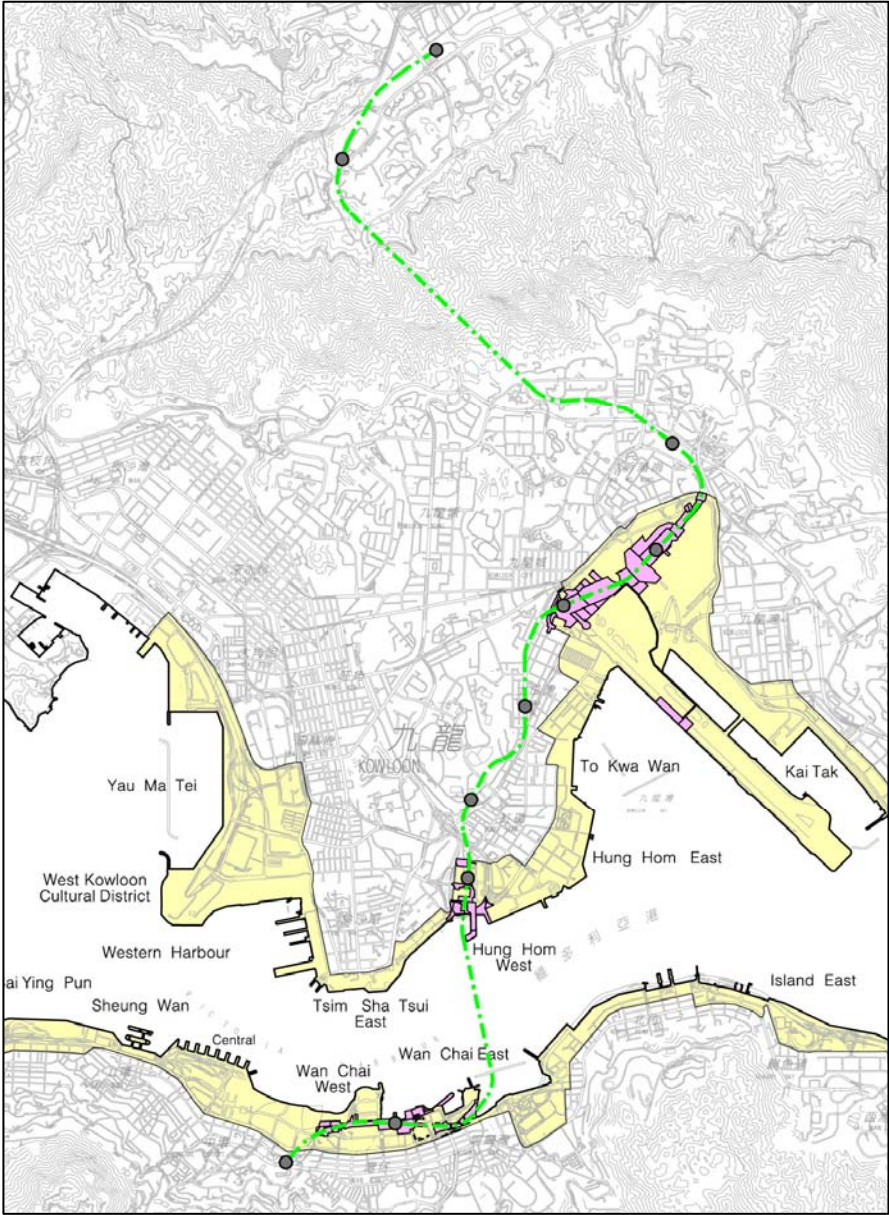
# SCL

## Temporary Facilities – Wan Chai North

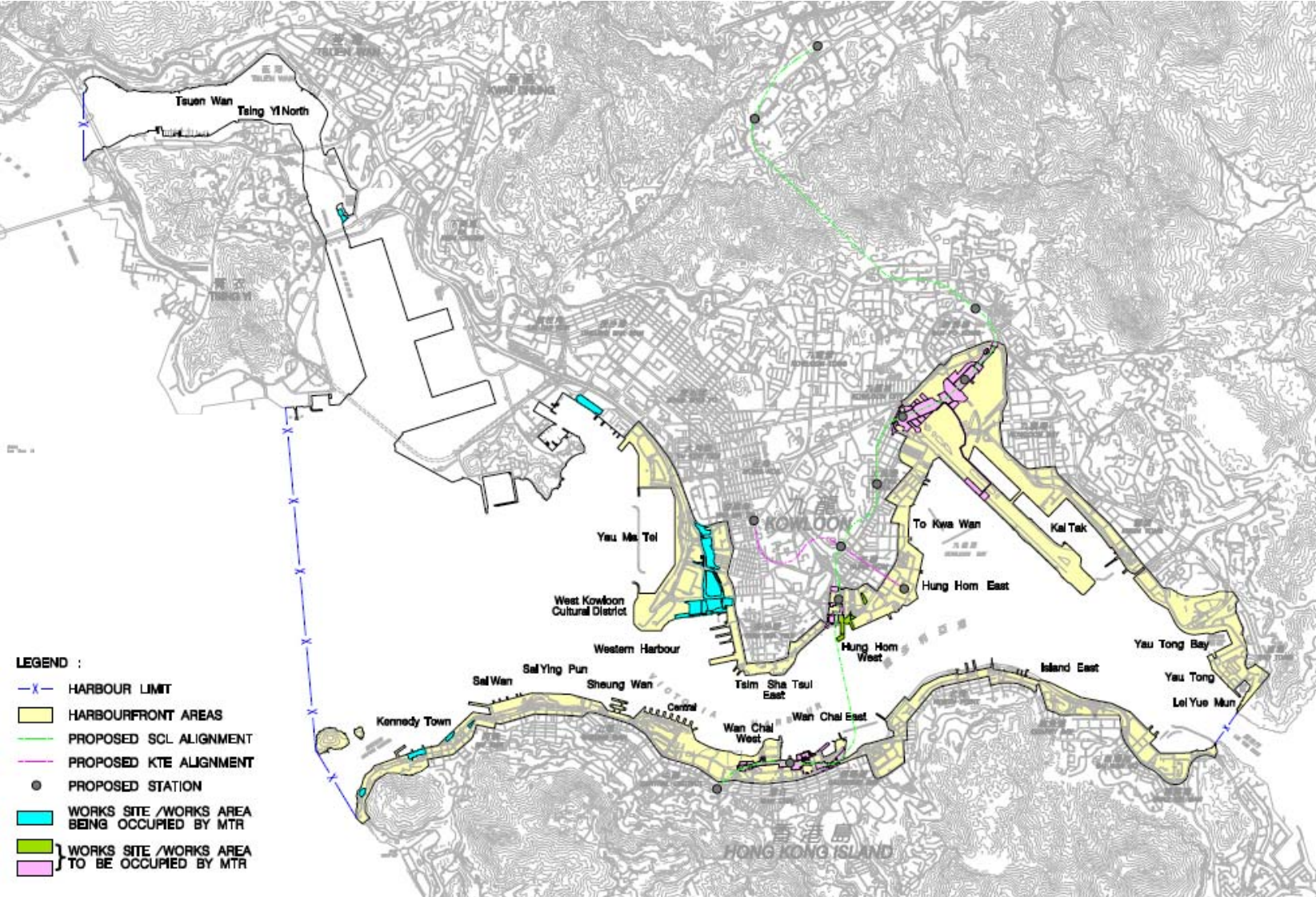


# SCL and the Harbourfront Area

- LEGEND :
- HARBOUR LIMIT
  - HARBOURFRONT AREAS
  - - - PROPOSED SCL ALIGNMENT
  - PROPOSED STATION
  - WORKS SITE /WORKS AREA TO BE OCCUPIED BY MTR



# Overview of Railway Works near the Harbourfront Areas





**Thank you**