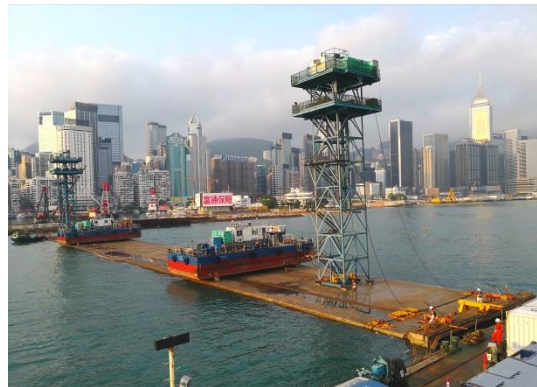


Last Tunnel Unit for Shatin to Central Link Cross-Harbour Tunnel Successfully Installed in the Victoria Harbour



The Shatin to Central Link (SCL) will provide a fourth cross harbour rail tunnel for Hong Kong. With the successful installation of the last Immersed Tube Tunnel (IMT) pre-cast unit for the cross-harbour rail tunnel in the Victoria Harbour on 12 April (Thursday), the immersion works of all 11 IMT pre-cast units have been completed. This is a significant step forward in the construction of the SCL project.

The SCL cross-harbour rail tunnel comprises 11 reinforced concrete IMT units, each weighing up to 23,000 tonnes and measuring around 160 metres in length about the height of a 50-storey building. The last IMT unit was immersed and installed onto the seabed near the Causeway Bay Typhoon Shelter on 12 April, approximately 10 months after the installation of the first IMT unit in June 2017.

-more-

The remaining works for the cross harbour tunnel will follow and the final breakthrough of the tunnel is expected to take place in early 2019.

Targeted for commissioning in 2021, the new SCL rail harbour crossing will extend the East Rail Line from Hung Hom Station to connect to the future Exhibition Centre Station in Wan Chai North and further on to the existing Admiralty Station. Passengers on the East Rail Line will then be able to travel from Hung Hom to Admiralty in just five minutes without any interchange.

- End -

About MTR Corporation

MTR Corporation is regarded as one of the world's leading railway operators for safety, reliability, customer service and cost efficiency. In its home base of Hong Kong, the Corporation operates ten commuter railway lines, a Light Rail network and a high-speed Airport Express link on which about 5.8 million passenger trips are made on a normal week day. Another 6.5 million passenger trips are made on the rail services it operates outside Hong Kong in the Mainland of China, the United Kingdom, Sweden and Australia. In addition, the Corporation is involved in a range of railway construction projects as well as railway consultancy and contracting services around the world. Leveraging on its railway expertise, the Corporation is involved in the development of transit-related residential and commercial property projects, property management, shopping malls leasing and management, advertising media and telecommunication services.

For more information about MTR Corporation, please visit www.mtr.com.hk.